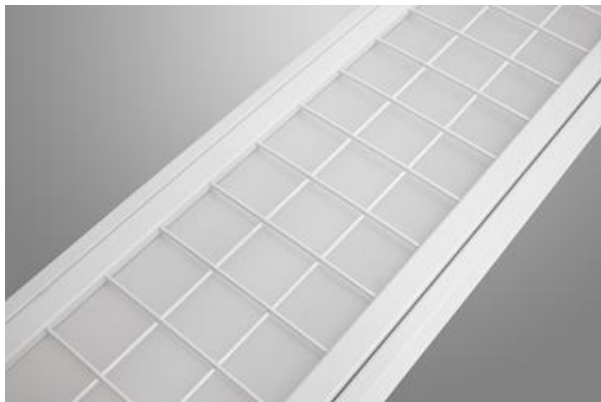
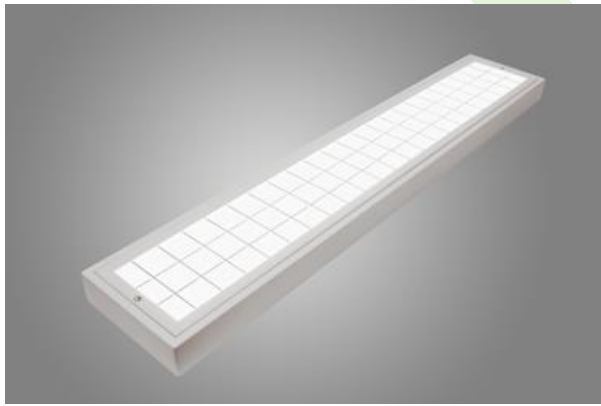




RUBIN SPORT NEW LED

Industrial luminaires



Surface mounted luminaire dedicated for the sports, gymnastics and squash halls, etc. Luminaire equipped with the protecting grid made from steel wire powder coated. Diffuser used in the luminaire provides less glare effect for the room users when compared to the light sources used in the fluorescents.



Primary School no1, Marki

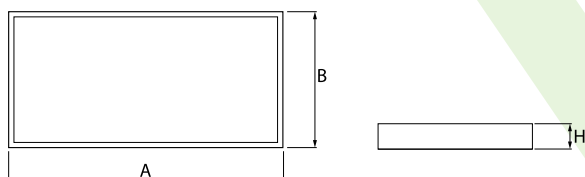
Pictograms:



Main parameters:

Name	Luminous flux LED [lm]	Power of luminaire [W]	Color [K]	Dimensions A x B x H [mm]
RUBIN SPORT NEW LED 8000	8052 / 8330	57	3000 / 4000	1190 x 220 x 60
RUBIN SPORT NEW LED 16000	16104 / 16660	114	3000 / 4000	1190 x 220 x 60
RUBIN SPORT NEW LED 24000	24156 / 24990	171	3000 / 4000	1190 x 320 x 60
RUBIN SPORT NEW LED 32000	32208 / 33320	228	3000 / 4000	1190 x 320 x 60

Technical drawing:



Light and electrical features:

Light source	LED
Voltage	220..240 V, 50..60 Hz
Lifetime of LED sources [h]	100000 (1) / 147000 (2)
Lx/By	L80/B10 (1) / L70/B50 (2)
CRI	>80
SDCM	3
Operating temperature range [°C]	5 ÷ 30
Driver	standard (E) DIM DALI (EDD) *

* Variant to specify when ordering

Mechanical features:

Material	steel sheet
Color	RAL 9016 (white)
Diffuser	Micro-Line (micro-prismatic diffuser PS) Micro-PRM (micro-prismatic diffuser PMMA)

Note: The power shown refers to the whole system (tolerance +/- 10%).

Specifications are subject to change. Pictures of the luminaires may differ from reality.
Date of last update: 20-03-2020