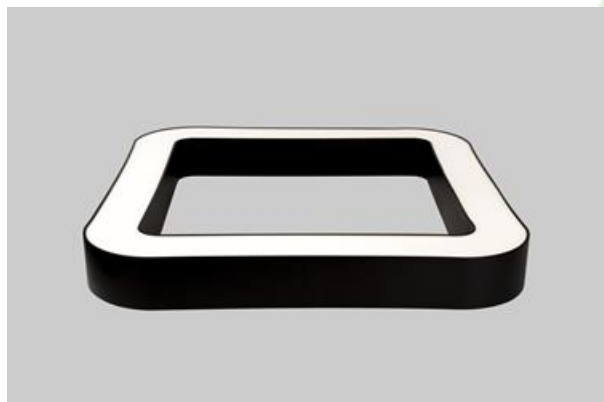
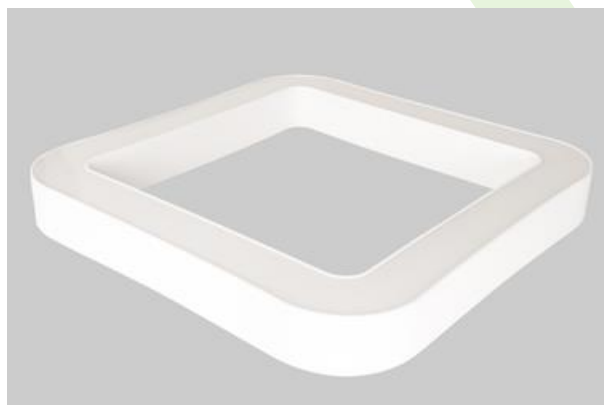




ARTSHAPE SQ LED

Architectural luminaires



Modernistic architectural luminaire in shapes of popular geometrical figures and fashionable design of simple form. The luminaire is adjusted to be mounted on the ceiling or suspended. It is equipped with highly efficient LED light sources. Various options of luminous flux and colour temperature are available. The sides of the shade are made of thin-walled aluminium profile. In combination with a possibility of painting according to RAL palette, the luminaires allow to achieve a unique arrangement of various premises. Perfectly even surface-emitting is made of material which has very good light transmittance factor and has good diffusion parameters. This luminaire is dedicated to room of high stylistic requirements. It is perfect for hotel atrium, office receptions, architectural studios, conference rooms or halls and corridors in exclusive buildings as well as for theatres or modern shops in shopping centres.



City Link, Warsaw

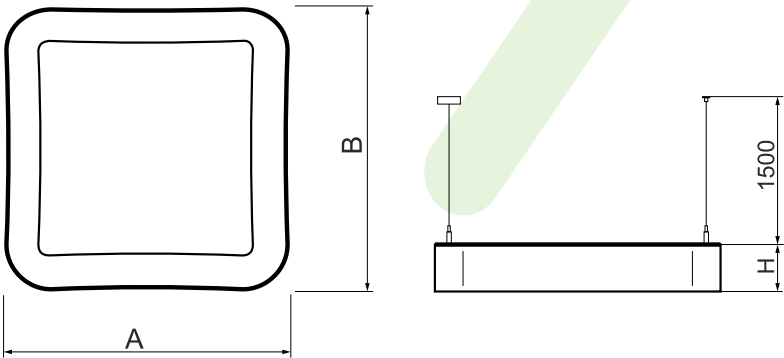
Pictograms:



Main parameters:

Name	Luminous flux LED [lm]	Power of luminaire [W]	Color [K]	Dimensions A x B x H [mm]
ARTSHAPE SQ LED SMALL EDGE 4000	3800 / 3960	32	3000 / 4000	660 x 660 x 80÷90
ARTSHAPE SQ LED SMALL EDGE 8000	7574 / 7920	65	3000 / 4000	660 x 660 x 80÷90
ARTSHAPE SQ LED SMALL FULL 4500	4455	35	4000	660 x 660 x 80÷90
ARTSHAPE SQ LED SMALL FULL 12000	11358	93	4000	660 x 660 x 80÷90
ARTSHAPE SQ LED MEDIUM EDGE 6000	5940	50	4000	930 x 930 x 80÷90
ARTSHAPE SQ LED MEDIUM EDGE 12000	11358 / 11880	92	3000 / 4000	930 x 930 x 80÷90
ARTSHAPE SQ LED LARGE EDGE 8000	7920	65	4000	1200 x 1200 x 80÷90
ARTSHAPE SQ LED LARGE EDGE 16000	15840	123	4000	1200 x 1200 x 80÷90
ARTSHAPE SQ LED SMALL EDGE TW 5500	5400	52	2700 ÷ 6500	660 x 660 x 80÷90
ARTSHAPE SQ LED MEDIUM EDGE TW 8000	7800	75	2700 ÷ 6500	930 x 930 x 80÷90
ARTSHAPE SQ LED LARGE EDGE TW 10000	10440	100	2700 ÷ 6500	1200 x 1200 x 80÷90
ARTSHAPE SQ LED SMALL EDGE UP&DOWN 3500/8000	3648/7920	95	4000	660 x 660 x 80÷90
ARTSHAPE SQ LED SMALL FULL UP&DOWN 3500/8000	3648/7920	95	4000	660 x 660 x 80÷90
ARTSHAPE SQ LED MEDIUM EDGE UP&DOWN 5100/12000	5320/11880	136	4000	930 x 930 x 80÷90
ARTSHAPE SQ LED MEDIUM FULL UP&DOWN 5200/17000	5320/17820	185	4000	930 x 930 x 80÷90
ARTSHAPE SQ LED LARGE EDGE UP&DOWN 6800/16000	6992/15840	185	4000	1200 x 1200 x 80÷90
ARTSHAPE SQ LED LARGE FULL UP&DOWN 6800/30000	6992/29700	295	4000	1200 x 1200 x 80÷90

Technical drawing:



Light and electrical features:

Light source	LED
Voltage	220..240 V, 50..60 Hz
Lifetime of LED sources [h]	60000/35000
Lx/By	L80/B10
CRI	>80
SDCM	3/4
Photobiological risk class	RG0
Operating temperature range [°C]	5 ÷ 30
Driver	standard (E) DIM DALI (EDD) *

* Variant to specify when ordering

Additional information:

On individual request it is possible to make EDGE luminaires in larger sizes and in RGBW versions. These luminaires are characterised by tightly closed chamber of LED light sources (IP65) thanks to this impurities are not visible on the diffuser for a long time of exploitation.

Mechanical features:

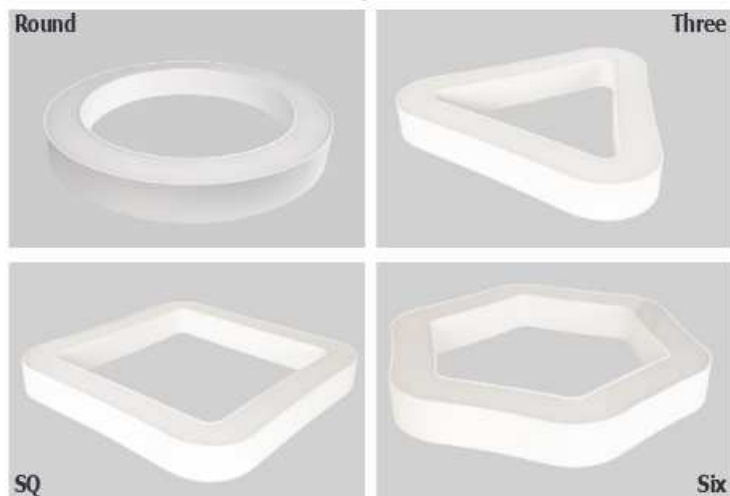
Material	aluminum
Color	RAL 9016 (white)
Diffuser	PLX (PMMA opal)

Note: The power shown refers to the whole system (tolerance +/- 10%).

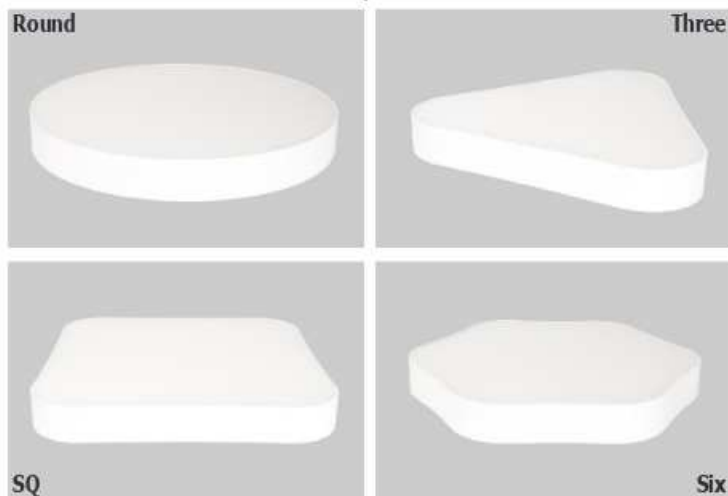
Specifications are subject to change. Pictures of the luminaires may differ from reality.
Date of last update: 20-03-2020

Dodatkowe informacje / Additional information / Zusätzliche Informationen:

Artshape EDGE



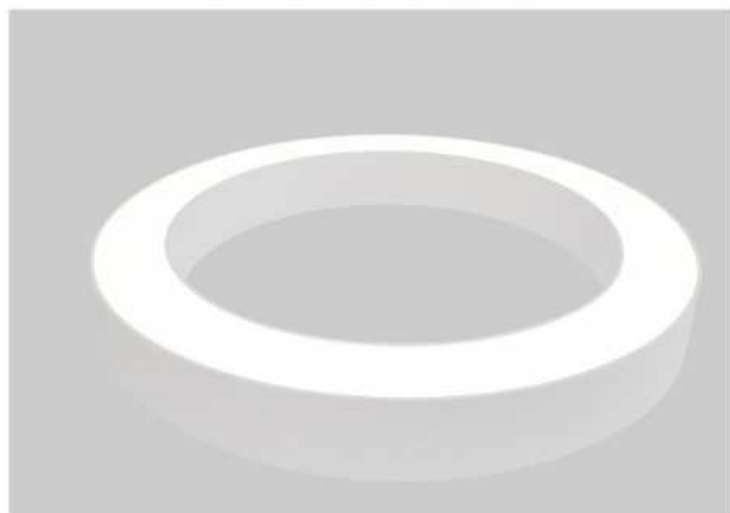
Artshape FULL



Artshape Up & Down (Round / Three / SQ / Six / Line)



Artshape TW (Tunable white)
(Round / Three / Sq / Six / Line)



2700 ÷ 6500 K

Artshape RGB
(Round Edge / Three Edge / Sq Edge / Six Edge)

