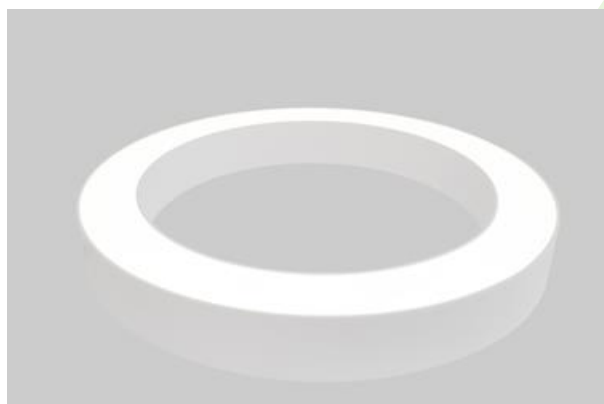




ARTSHAPE ROUND LED

Architectural luminaires



Modernistic architectural luminaire in shapes of popular geometrical figures and fashionable design of simple form. The luminaire is adjusted to be mounted on the ceiling or suspended. It is equipped with highly efficient LED light sources. Various options of luminous flux and colour temperature are available. The sides of the shade are made of thin-walled aluminium profile. In combination with a possibility of painting according to RAL palette, the luminaires allow to achieve a unique arrangement of various premises. Perfectly even surface-emitting is made of material which has very good light transmittance factor and has good diffusion parameters. This luminaire is dedicated to room of high stylistic requirements. It is perfect for hotel atrium, office receptions, architectural studios, conference rooms or halls and corridors in exclusive buildings as well as for theatres or modern shops in shopping centres.



BabyliSS PARIS office, Warsaw

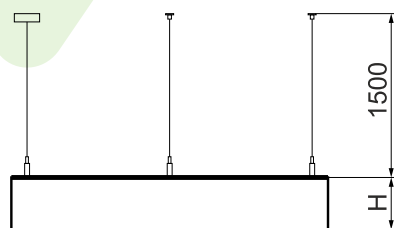
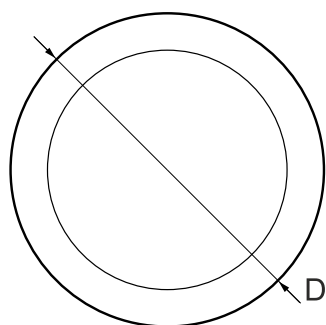
Pictograms:



Main parameters:

Name	Luminous flux LED [lm]	Power of luminaire [W]	Color [K]	Dimensions D x H [mm]
ARTSHAPE ROUND LED SMALL EDGE 3000	2845 / 2970	25	3000 / 4000	Ø650 x 80÷90
ARTSHAPE ROUND LED SMALL EDGE 6000	5681 / 5940	50	3000 / 4000	Ø650 x 80÷90
ARTSHAPE ROUND LED SMALL FULL 4000	4280 / 4456	35	3000 / 4000	Ø650 x 80÷90
ARTSHAPE ROUND LED SMALL FULL 6000	5952	47	4000	Ø650 x 80÷90
ARTSHAPE ROUND LED SMALL FULL 9000	9406	74	4000	Ø650 x 80÷90
ARTSHAPE ROUND LED MEDIUM EDGE 4500	4262 / 4455	35	3000 / 4000	Ø900 x 80÷90
ARTSHAPE ROUND LED MEDIUM EDGE 9000	8910 / 8521	70	4000 / 3000	Ø900 x 80÷90
ARTSHAPE ROUND LED MEDIUM FULL 14000	14356 / 13730	115	4000 / 3000	Ø900 x 80÷90
ARTSHAPE ROUND LED LARGE EDGE 6000	5940	50	4000	Ø1200 x 80÷90
ARTSHAPE ROUND LED LARGE EDGE 12000	11358 / 11880	93	3000 / 4000	Ø1200 x 80÷90
ARTSHAPE ROUND LED SMALL EDGE TW 4000	4320	42	2700 ÷ 6500	Ø650 x 80÷90
ARTSHAPE ROUND LED MEDIUM EDGE TW 6000	6120	59	2700 ÷ 6500	Ø900 x 80÷90
ARTSHAPE ROUND LED LARGE EDGE TW 8000	8520	82	2700 ÷ 6500	Ø1200 x 80÷90
ARTSHAPE ROUND LED SMALL EDGE UP&DOWN 3000/6000	3040/5940	76	4000	Ø650 x 80÷90
ARTSHAPE ROUND LED SMALL FULL UP&DOWN 3000/6000	3040/5952	73	4000	Ø650 x 80÷90
ARTSHAPE ROUND LED MEDIUM EDGE UP&DOWN 4200/9000	4256/8910	106	4000	Ø900 x 80÷90
ARTSHAPE ROUND LED MEDIUM FULL UP&DOWN 4000/14000	4256/14356	150	4000	Ø900 x 80÷90
ARTSHAPE ROUND LED LARGE EDGE UP&DOWN 5500/12000	5624/11880	140	4000	Ø1200 x 80÷90
ARTSHAPE ROUND LED LARGE FULL UP&DOWN 5500/24000	5624/24754	245	4000	Ø1200 x 80÷90

Technical drawing:



Light and electrical features:

Light source	LED
Voltage	220..240 V, 50..60 Hz
Lifetime of LED sources [h]	60000/35000
Lx/By	L80/B10
CRI	>80
SDCM	3/4
Photobiological risk class	RG0
Operating temperature range [°C]	5 ÷ 30
Driver	standard (E) DIM DALI (EDD) *

* Variant to specify when ordering

Additional information:

On individual request it is possible to make EDGE luminaires in larger sizes and in RGBW versions. These luminaires are characterised by tightly closed chamber of LED light sources (IP65) thanks to this impurities are not visible on the diffuser for a long time of exploitation.

Mechanical features:

Material	aluminum
Color	RAL 9016 (white)
Diffuser	PLX (PMMA opal)

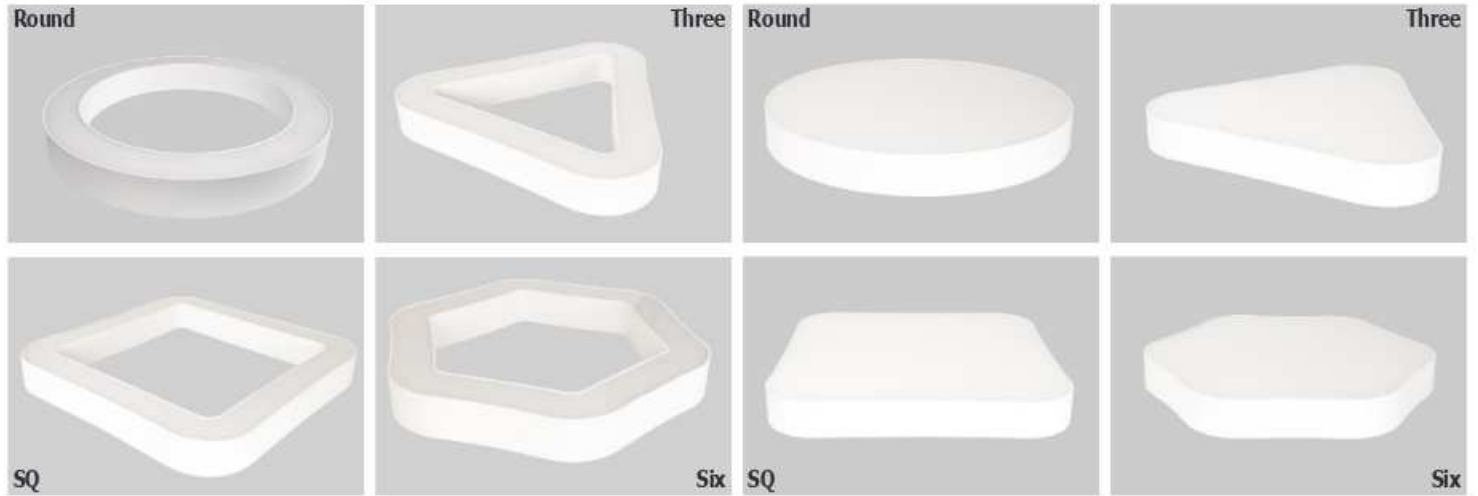
Note: The power shown refers to the whole system (tolerance +/- 10%).

Specifications are subject to change. Pictures of the luminaires may differ from reality.
Date of last update: 19-03-2020

Dodatkowe informacje / Additional information / Zusätzliche Informationen:

Artshape EDGE

Artshape FULL

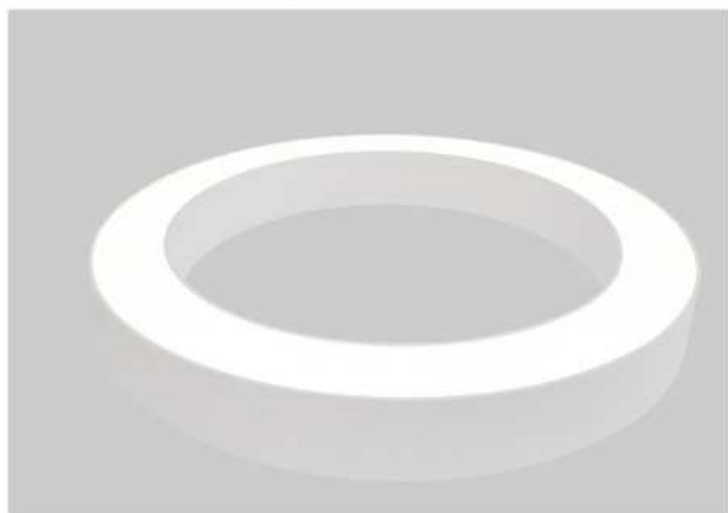


Artshape Up & Down (Round / Three / SQ / Six / Line)



Artshape TW (Tunable white)
(Round / Three / Sq / Six / Line)

Artshape RGB
(Round Edge / Three Edge / Sq Edge / Six Edge)



2700 ÷ 6500 K