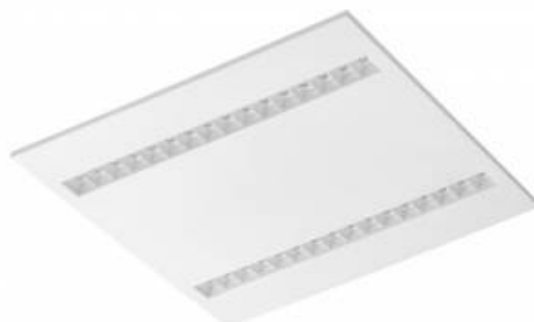


TERRA 2 LED

LED GO!



220-240 V | LED |  IP20

TECHNICAL PARAMETERS

Ingress protection:	IP20;
Nominal power [W]:	37.00;
Luminous flux [lm]*:	4300;
Colour rendering index:	>80;
SDCM:	≤ 3;
Energy efficiency class:	A+;
Material of the body:	powder coated steel;
Diffuser material:	PC;
Diffuser type:	Raster;
Optics:	HE;
Mounting version:	recessed;
Dimensions [mm]:	595x595x29;
UGR:	<16,7;

*Tolerance +/- 10%

CHARACTERISTICS

Recessed square LED luminaire with high total luminous Flux. Made of powder coated white steel sheet. The luminaire has a patented HE reflector installed ensuring efficiency at the level of 88 %, which also effectively eliminates glare.

APPLICATION

General purpose recessed luminaire for indoor application in offices or other utility rooms. Appropriate as the main light source even when the work requires eyesight concentration.

TERRA 2 LED

LED GO!

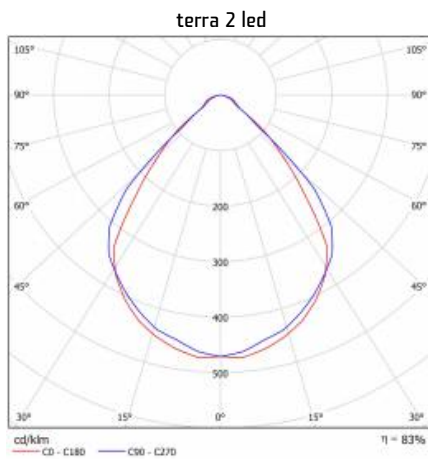
AVAILABLE TYPES

Click >> index, to see details

Nominal power [W]	Colour temperature [K]	Luminous flux [lm]*	Optics	Colour of the body	Energy efficiency class	Index
37	4000	4300	HE	white matt	A+	>> 226304
37	4000	4300	HE	white gloss	A+	>> 226311

*Tolerance +/- 10%

LUMINOUS INTENSITY DISTRIB. CURVE



The company reserves the right to make design changes or upgrades in the presented product. Product data sheet does not constitute an offer.

Revision date: 2019-11-06



Lena Lighting S.A.
ul. Kórnicka 52
63-000 Środa Wielkopolska

tel. +48 61 28 60 300
e-mail: office@lenalighting.pl
www.lenalighting.pl



The luminaire complies with the EU RoHS Directive 2011/65/UE



This product is a subject to electric and electronic waste equipment regulations (WEEE).

