

The logo for LENA LIGHTING, featuring a stylized square icon with a circle inside, followed by the text "LENA LIGHTING" in a bold, sans-serif font.

LENA
LIGHTING

INDUSTRY

New generation luminaire

The modern LED batten is available in seven special versions dedicated to various applications.

TYTAN LED
Looking further



POLISH PRODUCTION
POLISH TECHNOLOGY

We are responsible for the highest quality of lighting

It is worth choosing products supplied by renowned manufacturers, employing both highly-skilled engineering staff with the long-time experience in designing lighting systems, as well as having laboratories with equipment that enables the constant quality control of manufactured products.

Thanks to the professional R&D facilities, the state-of-the-art laboratory operated by specialists and with the constantly controlled production process, Lena Lighting offers full 5-year warranty for each lamp it manufactures.

NEXT GEN 

Looking further...

"Our aim during creating and designing the luminaire was to achieve not only excellent, but unique lighting parameters with no harm for aesthetics or ergonomics.

When designing the TYTAN LED, we tried to look at it from the investor's and the contractor's perspective, considering their needs and trying to answer why they should choose TYTAN LED.

Savings at each stage of the investment accompanied by excellent luminous flux 180 lm/W, safety and ergonomics assurance - those factors give advantage to TYTAN LED, which is just being introduced to the market."



Michał Jaraczewski
Lamp designer, R&D



Meet our best industrial product



TYTAN LED

Using the latest technology and specialized knowledge of our experts, we are proud to enrich our offer with a new generation industrial luminaire – TYTAN LED.

The whole product is designed for LED technology. TYTAN LED represents the NEXT GEN luminaires with a very high luminous flux, the highest energy-saving class (A++) and excellent technical parameters. Top product quality and safety comply with European EN standards attested by ENEC certificate & HACCP.



Primary technical data:

Colour temperature: 3000K, 4000K
Power: 16-70W
Total luminous flux: 2300lm – 10 900lm



Scan the QR code & go to dedicated site.

180 lm/W

SDCM \leq 3

A++

Warehouses Industrial halls Car Parks



Tytan led



TYTAN LED is dedicated for industrial use. It ensures good surface illumination in all sorts of halls and provides lower energy consumption. TYTAN LED is perfect for industrial spaces. Long lifespan, moisture & dust resistance, excellent lighting parameters, will result in a long and failure-free operation. Savings are noticeable at each stage: mounting, operation and service. Available versions:

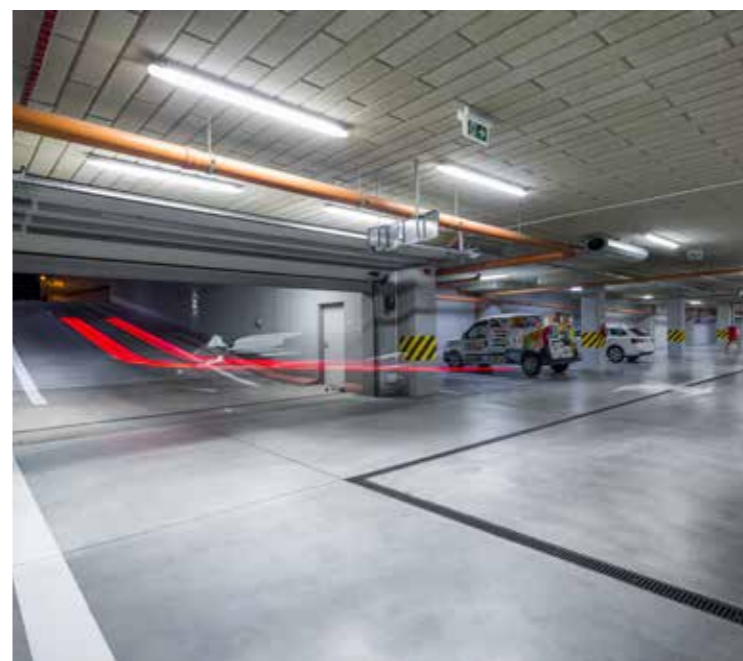
- **BASIC** - lower parameters, the best price-quality ratio.
- **24-48V** - for low voltage power supply installation.



Scan the QR code & go to product card now.

- Power [W]: 16 - 70
- Luminous flux [lm]: 2300 - 10 900
- Ingress protection class: IP66
- Impact resistance class: IK09
- Colour temperature [K]: 3000; 4000
- SDCM \leq 3
- Ra > 80
- Body material: PC
- Mounting: surface, suspended
- Certificates: ENEC, PZH, HACCP
- Dimensions (H/W/D) [mm]: 1152/85/80; 1432/85/80

up to
86%
ENERGY SAVINGS



High - storage spaces

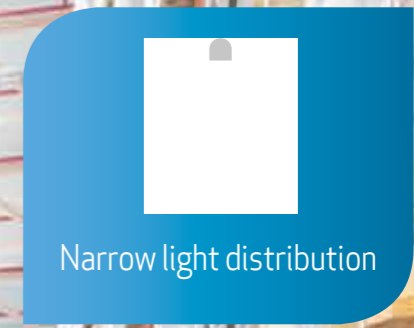
Tytan led hall

TYTAN LED HALL is dedicated for lighting high storage warehouses. Considering this application, especially designed narrow light distribution lenses have significant influence on reducing the cost of energy and ensuring comfortable light.



Scan the QR code & go to product card now.

- Power [W]: 56; 70
- Luminous flux [lm]: 7350-9800
- Ingress protection class: IP66
- Impact resistance class: IK09
- Colour temperature [K]: 3000; 4000
- SDCM ≤ 3
- Colour rendering index: Ra>80
- Body material: PC
- Mounting: surface, suspended
- Certificates: PZH, HACCP
- Dimensions (H/W/D) [mm]: 1152/85/80; 1432/85/80



Narrow light distribution



Animal breeding Spaces with chemicals

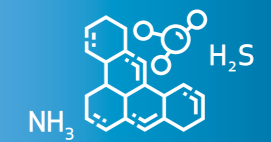
Tytan led chemo

Special-purpose LED luminaire with ABS body and PCT-G diffuser, characterized by increased resistance to chemical agents such as ammonia, chemical disinfectants. Thanks to this, it can be applied in chemically challenging environment without cracks, fogs and scratches.



Scan the QR code & go to product card now.

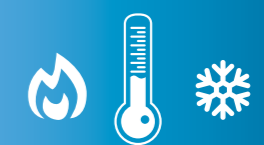
- Power [W]: 29-70
- Luminous flux [lm]: 4500-10900
- Ingress protection class: IP66
- Impact resistance class: IK09
- Colour temperature [K]: 4000
- SDCM ≤ 3
- Colour rendering index: Ra>80
- Body material: PC
- Mounting: surface, suspended
- Certificates: PZH, GREENGUARD
- Dimensions (H/W/D) [mm]: 1152/85/80; 1432/85/80



Chemicals proof

Extreme temperature environment

Tytan led endura



Temperature proof

Tytan LED Endura is designed for lighting areas with the ambient temperature between -35°C to +55°C. Cold rooms' lighting requirements are far from the standard. Unfavourable conditions of the environment do not influence the fitting's reliability and efficacy.



Scan the QR code & go to product card now.

- Power [W]: 26-70
- Luminous flux [lm]: 4900-10900
- Ingress protection class: IP66
- Impact resistance class: IK09
- Colour temperature [K]: 4000
- SDCM ≤ 3
- Colour rendering index: Ra>80
- Body material: PC
- Mounting: surface, suspended
- Certificates: ENEC, PZH, HACCP
- Dimensions (H/W/D) [mm]: 1152/85/80; 1432/85/80



Temporary light on construction sites



Tytan led workplace

Safety is one of the priorities during construction works, where perfect illumination is crucial to ensure it. Combination of a high luminous flux and perfect technical parameters, such as high IP, impact resistance, easy assembly and power supply, make the Tytan LED perfect for this kind of applications.



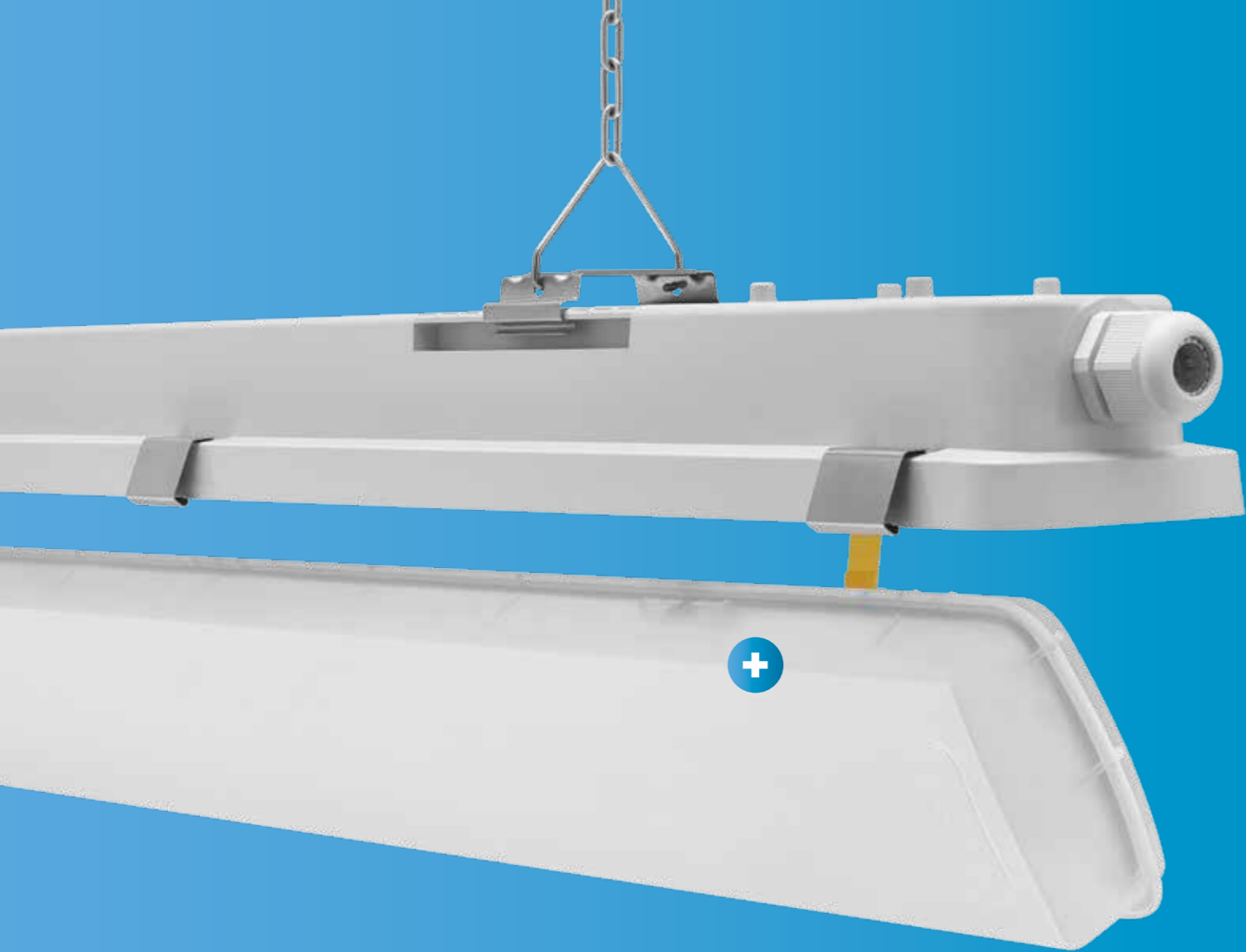
Scan the QR code & go
to product card now.

- Power [W]: 29
- Luminous flux [lm]: 4500
- Ingress protection class: IP44
- Impact resistance class: IK09
- Colour temperature [K]: 4000
- SDCM ≤ 3
- Colour rendering index: Ra>80
- Body material: PC
- Mounting: surface, suspended. It is dedicated as an aid for providing temporary light on site.
- Dimensions (H/W/D) [mm]:1152/85/80



Construction works





Suspended diffuser
integrated with LED GO! panel

Ergonomic assembly

The system of suspended diffuser integrated with LED module saves time and increases working comfort of installers and service workers. It enables convenient, quick and easy assembly and disassembly.



Advanced optics

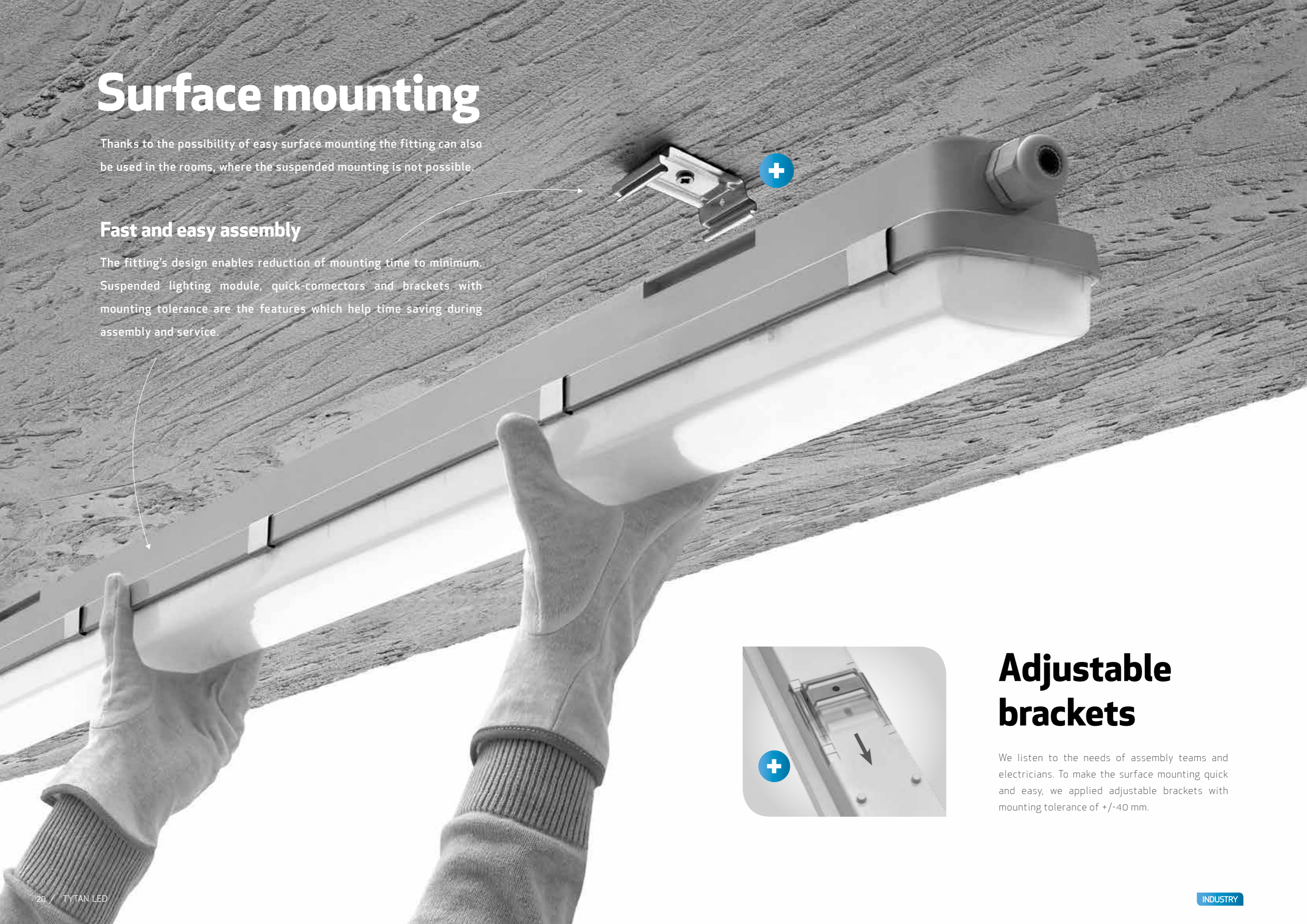
Diffuser made of polycarbonate, dedicated for LED solutions, ensures a perfect balance between high permeability of 93% and the correct light distribution. Light is spread evenly throughout the entire length of diffuser.

Surface mounting

Thanks to the possibility of easy surface mounting the fitting can also be used in the rooms, where the suspended mounting is not possible.

Fast and easy assembly

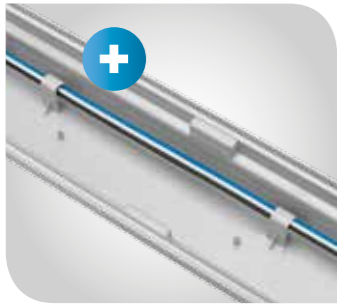
The fitting's design enables reduction of mounting time to minimum. Suspended lighting module, quick-connectors and brackets with mounting tolerance are the features which help time saving during assembly and service.



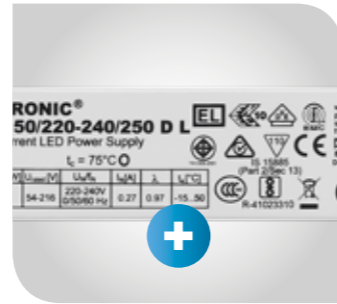
Adjustable brackets

We listen to the needs of assembly teams and electricians. To make the surface mounting quick and easy, we applied adjustable brackets with mounting tolerance of +/-40 mm.

What's inside?



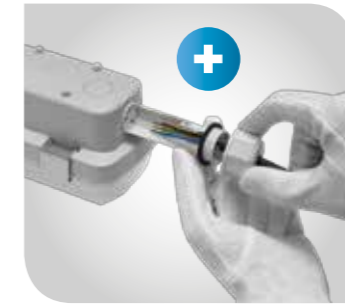
Specially designed grips enable through-wiring in a regular way.



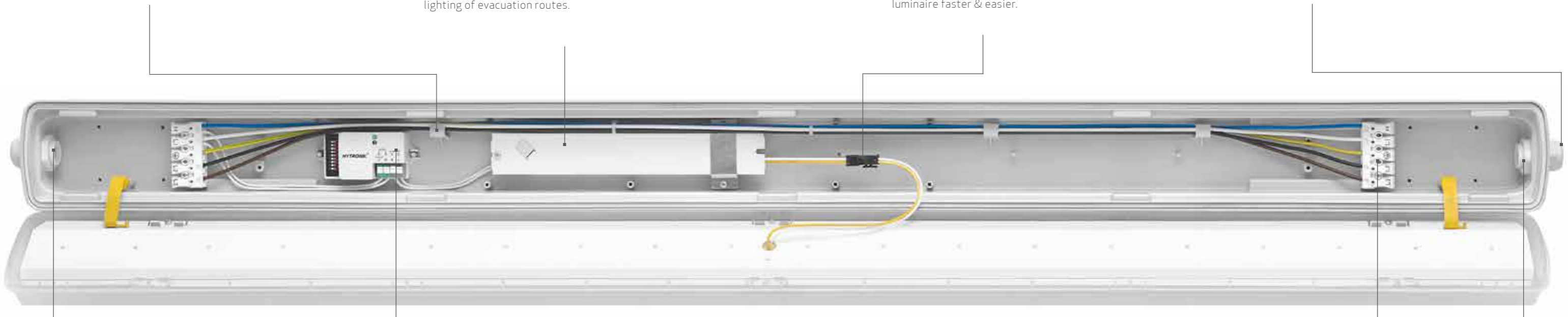
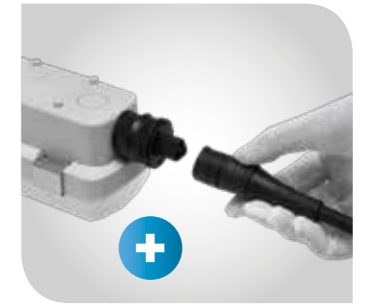
Branded components of the highest quality ensure reliability of working and reduce costs of servicing. Option with an emergency module ensures proper lighting of evacuation routes.



Quick connector between the lighting module and the driver makes the assembly of the luminaire faster & easier.



Fast-connector in Rapid-A and Rapid-D options enables connecting the power supply extremely quick and easy. It doesn't require opening the product.



The possibility of connecting the power supply from several sides makes assembly easier, even in hard-to-reach places.



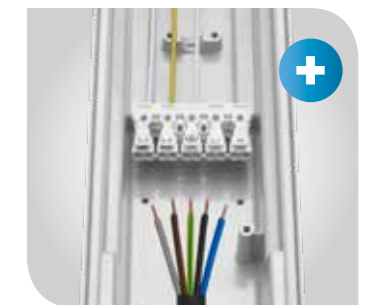
Using a microwave motion sensor (RCR) enables to provide light where and when it is necessary, which allows to save energy.



With LS2 through-wiring, the luminaires can be easily connected in lighting lines.

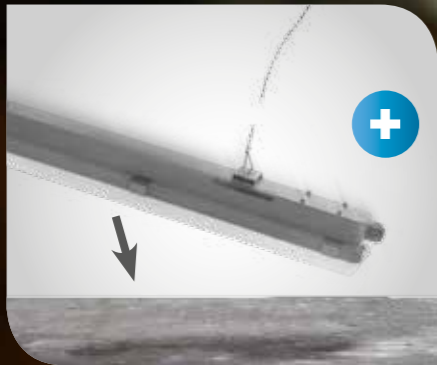


Three or five pole connectors enable to adjust to specific project requirements (sensors, line connection).



Design and equipment differences depend on the chosen lamp version

Hermetic & solid construction



TYTAN LED can be successfully used in the areas with high moisture and dust conditions. Design ensures ingress protection class **IP66** while the body and diffuser made of polycarbonate ensure high impact protection class **IK09**.

In places especially exposed to mechanical damages or vandalism, it is recommended to use the lighting option with protection against unauthorized opening. With this option TYTAN LED can be successfully used in stadiums, car parks or underground passages and in every other place, where the risk of vandalism is higher.



Solid workmanship



One of the keys to the success of Lena Lighting S.A. is the high quality of our products. Since 2005 the company has been working under ISO 9001:2000 Quality Management System. Our luminaires meet the highest standards of international certificates, which translates into high reliability, long life and energy efficiency of our products.



IP66

Ingress protection class

IK09

Impact protection class



Safe, easy and ergonomic transport

TYTAN LED boxes are stable, durable and designed to match the pallet's dimensions perfectly. It is possible to transport a lot of products on one pallet, which significantly reduces the cost of transport.



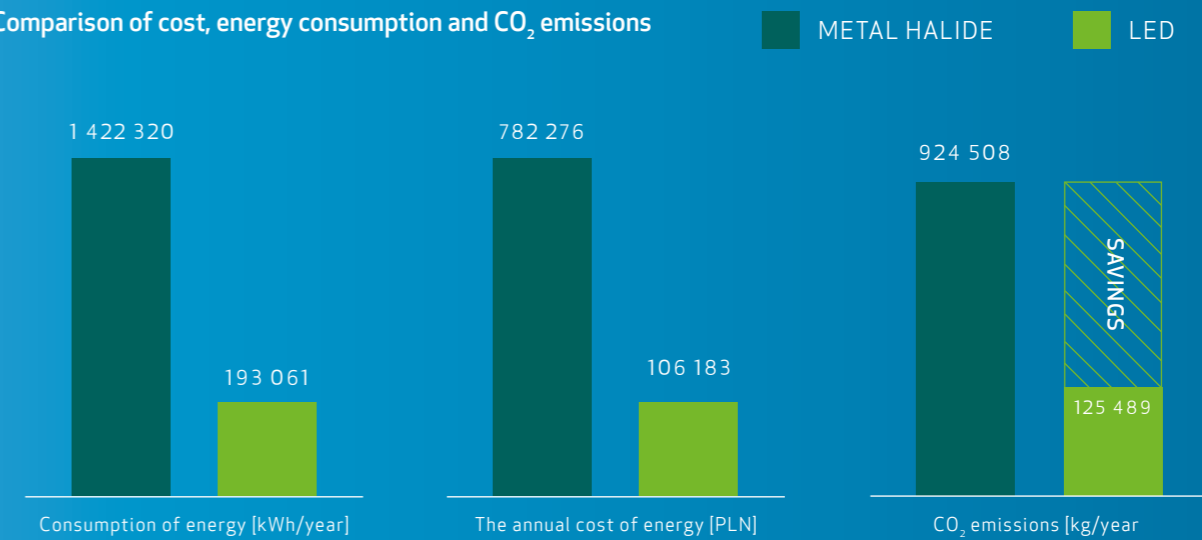


Light that supports passion

Keeping the work-life balance is not an easy task, becoming the challenge of our times. One task is more important than the other, and in the constant pursuit there is not enough time for realization of the passion. Especially in the winter, when it gets dark quickly, it is difficult to be active after work and to make the worktime not fill our whole day. The TYTAN LED products are also designed to provide light to places, where you can pursue your passions.

Less lamps better effect

Comparison of cost, energy consumption and CO₂ emissions



Tytan LED HALL

Case study

The Investor modernized lighting in a production hall with a surface of 23397,15m². The required luminous flux on the rooms' floor was 150 lx.

Due to the building occupancy of 16 hours per day, energy saving was the most important criterion of choosing the fittings and the next significant factor for making the choice was reliability, because each stoppage in the logistic center causes unnecessary costs.

Initial project was designed on 400W HIGH-BAY metal halide discharge. Considering the Investor's key requirements, we suggested changing the traditional fittings to TYTAN LED HALL 70W 4000K 9800lm IP66.

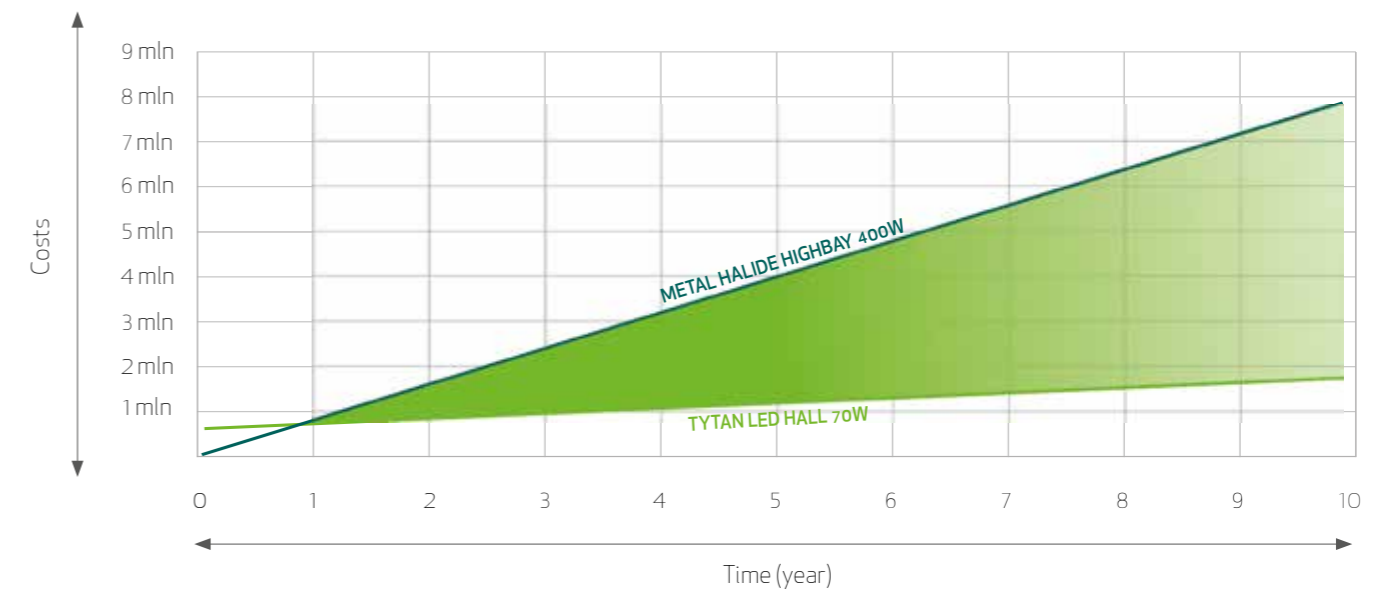
654 pcs

TYTAN LED HALL 70W

773 pcs

HIGHBAY 400W

Amortisation of costs



The comparative analysis showed a lot of benefits from using LED fittings. According to the suggested project, there were 119 luminaires less, which resulted in significant savings of the costs of installation. Due to using TYTAN LED, the costs were also decreased.

The effect was reached not only thanks to 86% lower power consumption but also because of minimizing the costs of maintenance (for example replacing fluorescent lamps) by using modern LED GO! light modules with long lifespan in LED options. The cost of purchasing TYTAN LED HALL is compensated by the reduction of electricity costs and the estimated time for return on investment is scheduled to less than 1 year. After this time the Investor will experience constant, dynamic profits' increase thanks to using LED luminaires.

86% ENERGY SAVINGS



119 LESS LUMINAIRES

The basic assumption of case study:

Time of lighting 16 hours per day; price for 10 kWh - 1,29 euro; the cost of the light sources on the basis of average market prices, frequency of replacing the light sources according to the lifespan.

Lighting design is on our side

The type of lighting and its arrangement require right selection in the design process. Each room has different lighting requirements, which is why it is important to meet them.

Engineers working in our design studio will prepare a project which meets all standards and guarantees comfort of use. The customer receives free consultancy and project documentation, guaranteeing the compliance with standards and high quality. The comprehensive project often includes a lighting control system, ensuring maximum energy savings during use.

We support our customers in the selection of the lighting concept, the products, as well as by preparing visualizations.

DIALux

AUTODESK
REVIT

SOLIDWORKS





Tytan led / 16W, 29W, 35W

Power [W]	Colour temperature [K]	Luminous flux [lm]	Motion sensor	DIMM DALI	Through wiring	Emergency lighting [h]	Version	EEL	Dimensions L/W/H [mm]	Index
VERSION 16W										
16	3000	2300	-	-	-	-	-	A++	1152/85/80	541469
16	3000	2300	-	yes	-	-	-	A++	1152/85/80	541346
16	3000	2300	-	-	-	-	RAPID-A	A++	1152/85/80	541698
16	3000	2300	-	-	-	-	RAPID-D	A++	1152/85/80	541810
16	3000	2300	yes	-	-	-	-	A++	1152/85/80	541520
16	4000	2500	-	yes	-	-	-	A++	1152/85/80	541407
16	4000	2500	-	-	-	-	RAPID-A	A++	1152/85/80	541636
16	4000	2500	-	-	-	-	RAPID-D	A++	1152/85/80	541759
16	4000	2500	yes	-	-	-	-	A++	1152/85/80	541476
16	4000	2500	-	-	-	-	-	A++	1152/85/80	541353
16	3000	2300	-	-	LS2	-	-	A++	1152/85/80	541681
16	3000	2300	-	-	LS2	-	RAPID-A	A++	1152/85/80	541803
16	3000	2300	-	-	LS2	-	RAPID-D	A++	1152/85/80	541537
16	4000	2500	-	-	LS2	-	-	A++	1152/85/80	541414
16	4000	2500	-	-	LS2	-	RAPID-A	A++	1152/85/80	541629
16	4000	2500	-	-	LS2	-	RAPID-D	A++	1152/85/80	541742
VERSION 29W										
29	3000	4200	yes	-	-	-	-	A++	1152/85/80	906084
29	3000	4200	-	-	-	-	-	A++	1152/85/80	906503
29	3000	4200	-	-	-	3	-	A++	1152/85/80	906060
29	3000	4200	-	yes	-	-	-	A++	1152/85/80	906077
29	3000	4200	-	-	-	-	RAPID-A	A++	1152/85/80	906022
29	3000	4200	-	-	-	-	RAPID-D	A++	1152/85/80	906046
29	4000	4500	yes	-	-	-	-	A++	1152/85/80	906176
29	4000	4500	-	-	-	-	-	A++	1152/85/80	906091
29	4000	4500	-	-	-	3	-	A++	1152/85/80	906152
29	4000	4500	-	yes	-	-	-	A++	1152/85/80	906169
29	4000	4500	-	-	-	-	RAPID-A	A++	1152/85/80	906114
29	4000	4500	-	-	-	-	RAPID-D	A++	1152/85/80	906138
29	4000	4500	-	-	-	-	-	A++	1152/85/80	908026
29	3000	4200	-	-	LS2	-	-	A++	1152/85/80	906015
29	3000	4200	-	-	LS2	-	RAPID-A	A++	1152/85/80	906039
29	3000	4200	-	-	LS2	-	RAPID-D	A++	1152/85/80	907326
29	4000	4500	-	-	LS2	-	-	A++	1152/85/80	906107
29	4000	4500	-	-	LS2	-	RAPID-A	A++	1152/85/80	906121
29	4000	4500	-	-	LS2	-	RAPID-D	A++	1152/85/80	906411
VERSION 35W										
35	3000	5200	yes	-	-	-	-	A++	1432/85/80	906626
35	3000	5200	-	-	-	-	-	A++	1432/85/80	906541
35	3000	5200	-	-	-	3	-	A++	1432/85/80	906602
35	3000	5200	-	yes	-	-	-	A++	1432/85/80	906619
35	3000	5200	-	-	-	-	RAPID-A	A++	1432/85/80	906565
35	3000	5200	-	-	-	-	RAPID-D	A++	1432/85/80	906589
35	4000	5500	yes	-	-	-	-	A++	1432/85/80	906718
35	4000	5500	-	-	-	-	-	A++	1432/85/80	906633
35	4000	5500	-	-	-	3	-	A++	1432/85/80	906695
35	4000	5500	-	yes	-	-	-	A++	1432/85/80	906701



Tytan led / 35W, 43W, 46W

Power [W]	Colour temperature [K]	Luminous flux [lm]	Motion sensor	DIMM DALI	Through wiring	Emergency lighting [h]	Version	EEL	Dimensions L/W/H [mm]	Index
35	4000	5500	-	-	-	-	RAPID-A	A++	1432/85/80	906657
35	4000	5500	-	-	-	-	RAPID-D	A++	1432/85/80	906671
35	3000	5200	-	-	LS2	-	-	A++	1432/85/80	906558
35	3000	5200	-	-	LS2	-	RAPID-A	A++	1432/85/80	906572
35	3000	5200	-	-	LS2	-	RAPID-D	A++	1432/85/80	906596
35	4000	5500	-	-	LS2	-	-	A++	1432/85/80	906640
35	4000	5500	-	-	LS2	-	RAPID-A	A++	1432/85/80	906664
35	4000	5500	-	-	LS2	-	RAPID-D	A++	1432/85/80	906688
VERSION 43W										
43	3000	6500	-	-	-	-	-	A++	1432/85/80	907425
43	3000	6500	-	-	-	3	-	A++	1432/85/80	907432
43	3000	6500	-	yes	-	-	-	A++	1432/85/80	907449
43	3000	6500	-	-	-	-	RAPID-A	A++	1432/85/80	907463
43	3000	6500	-	-	-	-	RAPID-D	A++	1432/85/80	907487
43	3000	6500	yes	-	-	-	-	A++	1432/85/80	907500
43	4000	7000	-	-	-	-	-	A++	1432/85/80	907333
43	4000	7000	-	-	-	3	-	A++	1432/85/80	907340
43	4000	7000	-	yes	-	-	-	A++	1432/85/80	907357
43	4000	7000	-	-	-	-	RAPID-A	A++	1432/85/80	907371
43	4000	7000	-	-	-	-	RAPID-D	A++	1432/85/80	907395
43	4000	7000	yes	-	-	-	-	A++	1432/85/80	907418
43	3000	6500	-	-	LS2	-	-	A++	1432/85/80	907456
43	3000	6500	-	-	LS2	-	RAPID-D	A++	1432/85/80	907494
43	3000	6500	-	-	LS2	-	RAPID-A	A++	1432/85/80	907470
43	4000	7000	-	-	LS2	-	-	A++	1432/85/80	907364
43	4000	7000	-	-	LS2	-	RAPID-A	A++	1432/85/80	907388
43	4000	7000	-	-	LS2	-	RAPID-D	A++	1432/85/80	907401
VERSION 46W										
46	3000	7000	yes	-	-	-	-	A++	1152/85/80	906442
46	3000	7000	-	-	-	-	-	A++	1152/85/80	906367
46	3000	7000	-	-	-	3	-	A++	1152/85/80	906428
46	3000	7000	-	yes	-	-	-	A++	1152/85/80	906435
46	3000	7000	-	-	-	-	RAPID-A	A++	1152/85/80	906381
46	3000	7000	-	-	-	-	RAPID-D	A++	1152/85/80	906404
46	4000	7400	yes	-	-	-	-	A++	1152/85/80	906534
46	4000	7400	-	-	-	-	-	A++	1152/85/80	906459
46	4000	7400	-	-	-	3	-	A++	1152/85/80	906510
46	4000	7400	-	yes	-	-	-	A++	1152/85/80	906527
46	4000	7400	-	-	-	-	RAPID-A	A++	1152/85/80	906473
46	4000	7400	-	-	-	-	RAPID-D	A++	1152/85/80	906497
46	3000	7000	-	-	LS2	-	-	A++	1152/85/80	906374
46	3000	7000	-	-	LS2	-	RAPID-A	A++	1152/85/80	906398
46	3000	7000	-	-	LS2	-	RAPID-D	A++	1152/85/80	906237
46	4000	7400	-	-	LS2	-	-	A++	1152/85/80	906466
46	4000	7400	-	-	LS2	-	RAPID-A	A++	1152/85/80	906480
46	4000	7400	-	-	LS2	-	RAPID-D	A++	1152/85/80	906329



Tytan led / 56W, 70W

Power [W]	Colour temperature [K]	Luminous flux [lm]	Motion sensor	DIMM DALI	Through wiring	Emergency lighting [h]	Version	EEL	Dimensions L/W/H [mm]	Index
VERSION 56W										
56	3000	8600	yes	-	-	-	-	A++	1152/85/80	906268
56	3000	8600	-	-	-	-	-	A++	1152/85/80	906183
56	3000	8600	-	-	-	3	-	A++	1152/85/80	906244
56	3000	8600	-	yes	-	-	-	A++	1152/85/80	906251
56	3000	8600	-	-	-	-	RAPID-A	A++	1152/85/80	906206
56	3000	8600	-	-	-	-	RAPID-D	A++	1152/85/80	906220
56	4000	9000	yes	-	-	-	-	A++	1152/85/80	906350
56	4000	9000	-	-	-	-	-	A++	1152/85/80	906275
56	4000	9000	-	-	-	3	-	A++	1152/85/80	906336
56	4000	9000	-	yes	-	-	-	A++	1152/85/80	906343
56	4000	9000	-	-	-	-	RAPID-A	A++	1152/85/80	906299
56	4000	9000	-	-	-	-	RAPID-D	A++	1152/85/80	906312
56	3000	8600	-	-	LS2	-	-	A++	1152/85/80	906190
56	3000	8600	-	-	LS2	-	RAPID-A	A++	1152/85/80	906213
56	3000	8600	-	-	LS2	-	RAPID-D	A++	1152/85/80	906053
56	4000	9000	-	-	LS2	-	-	A++	1152/85/80	906282
56	4000	9000	-	-	LS2	-	RAPID-A	A++	1152/85/80	906305
56	4000	9000	-	-	LS2	-	RAPID-D	A++	1152/85/80	906145
VERSION 70W										
70	3000	10300	-	yes	-	-	-	A++	1432/85/80	906794
70	3000	10300	yes	-	-	-	-	A++	1432/85/80	906800
70	3000	10300	-	-	-	-	-	A++	1432/85/80	906725
70	3000	10300	-	-	-	3	-	A++	1432/85/80	906787
70	3000	10300	-	-	-	-	RAPID-A	A++	1432/85/80	906749
70	3000	10300	-	-	-	-	RAPID-D	A++	1432/85/80	906763
70	4000	10900	-	yes	-	-	-	A++	1432/85/80	906886
70	4000	10900	yes	-	-	-	-	A++	1432/85/80	906893
70	4000	10900	-	-	-	-	-	A++	1432/85/80	906817
70	4000	10900	-	-	-	3	-	A++	1432/85/80	906879
70	4000	10900	yes	-	-	3	-	A++	1432/85/80	907777
70	4000	10900	-	-	-	-	RAPID-A	A++	1432/85/80	906831
70	4000	10900	-	-	-	-	RAPID-D	A++	1432/85/80	906855
70	3000	10300	-	-	LS2	-	-	A++	1432/85/80	906732
70	3000	10300	-	-	LS2	-	RAPID-A	A++	1432/85/80	906756
70	3000	10300	-	-	LS2	-	RAPID-D	A++	1432/85/80	906770
70	4000	10900	-	-	LS2	-	-	A++	1432/85/80	906824
70	4000	10900	-	-	LS2	-	RAPID-A	A++	1432/85/80	906848
70	4000	10900	-	-	LS2	-	RAPID-D	A++	1432/85/80	906862



Tytan led hall / 56W, 70W

Power [W]	Colour temperature [K]	Luminous flux [lm]	Diffuser type	DIMM DALI	Motion sensor	Through wiring	EEL	Dimensions L/W/H [mm]	Index
VERSION 56W									
56	3000	7350	transparent	-	-	-	A++	1152/85/80	906909
56	3000	7350	transparent	yes	-	-	A++	1152/85/80	906978
56	3000	7350	transparent	-	yes	-	A++	1152/85/80	906985
56	4000	7800	transparent	-	-	-	A++	1152/85/80	906992
56	4000	7800	transparent	yes	-	-	A++	1152/85/80	907067
56	4000	7800	transparent	-	yes	-	A++	1152/85/80	907074
56	3000	7350	transparent	-	-	-	A++	1152/85/80	906923
56	4000	7800	transparent	-	-	-	A++	1152/85/80	907012
56	3000	7350	transparent	-	-	-	A++	1152/85/80	906947
56	4000	7800	transparent	-	-	-	A++	1152/85/80	907036
56	3000	7350	transparent	-	-	LS2	A++	1152/85/80	906916
56	4000	7800	transparent	-	-	LS2	A++	1152/85/80	907005
56	3000	7350	transparent	-	-	LS2	A++	1152/85/80	906930
56	4000	7800	transparent	-	-	LS2	A++	1152/85/80	907029
56	3000	7350	transparent	-	-	LS2	A++	1152/85/80	906954
56	4000	7800	transparent	-	-	LS2	A++	1152/85/80	907043
VERSION 70W									
70	4000	9800	transparent	-	yes	-	A++	1432/85/80	907258
70	3000	9200	transparent	-	-	-	A++	1432/85/80	907081
70	3000	9200	transparent	yes	-	-	A++	1432/85/80	907159
70	3000	9200	transparent	-	yes	-	A++	1432/85/80	907166
70	4000	9800	transparent	-	-	-	A++	1432/85/80	907173
70	4000	9800	transparent	yes	-	-	A++	1432/85/80	907241
70	3000	9200	transparent	-	-	-	A++	1432/85/80	907104
70	4000	9800	transparent	-	-	-	A++	1432/85/80	907197
70	3000	9200	transparent	-	-	-	A++	1432/85/80	907128
70	4000	9800	transparent	-	-	-	A++	1432/85/80	907210
70	3000	9200	transparent	-	-	LS2	A++	1432/85/80	907098
70	4000	9800	transparent	-	-	LS2	A++	1432/85/80	907180
70	3000	9200	transparent	-	-	LS2	A++	1432/85/80	907111
70	4000	9800	transparent	-	-	LS2	A++	1432/85/80	907203
70	3000	9200	transparent	-	-	LS2	A++	1432/85/80	907135
70	4000	9800	transparent	-	-	LS2	A++	1432/85/80	907227

Tytan led chemo / 29W, 35W, 46W, 70W

Power [W]	Colour temperature [K]	Luminous flux [lm]	Diffuser type	Motion sensor	Through wiring	EEL	Dimensions L/W/H [mm]	Index
VERSION 29W								
29	4000	4500	MAT	-	-	A++	1152/85/80	358302
29	4000	4500	MAT	-	-	A++	1152/85/80	358333
29	4000	4500	MAT	yes	-	A++	1152/85/80	358326
29	4000	4500	MAT	-	LS2	A++	1152/85/80	358319
VERSION 35W								
35	4000	5500	MAT	-	-	A++	1432/85/80	358722
VERSION 46W								
46	4000	7400	MAT	-	-	A++	1152/85/80	358371
46	4000	7400	MAT	-	-	A++	1152/85/80	358340
46	4000	7400	MAT	yes	-	A++	1152/85/80	358364
46	4000	7400	MAT	-	LS2	A++	1152/85/80	358357
VERSION 70W								
70	4000	10900	MAT	-	-	A++	1432/85/80	358739

Tytan led endura / 26W, 33W, 56W, 70W

Power [W]	Colour temperature [K]	Luminous flux [lm]	Diffuser type	EEL	Dimensions L/W/H [mm]	Index
VERSION PLUS						
26	4000	4900	MAT	A++	1152/85/80	358029
33	4000	5900	MAT	A++	1432/85/80	358036
VERSION MINUS						
56	4000	9000	MAT	A++	1152/85/80	358043
70	4000	10900	MAT	A++	1432/85/80	358050

Tytan led 24-48V / 20W

Power [W]	Colour temperature [K]	Luminous flux [lm]	Diffuser type	EEL	Dimensions L/W/H [mm]	Index
20	3000	2540	MAT	A+	1152/80/85	358111
20	4000	2700	MAT	A+	1152/80/85	358104

Tytan led workplace / 29W

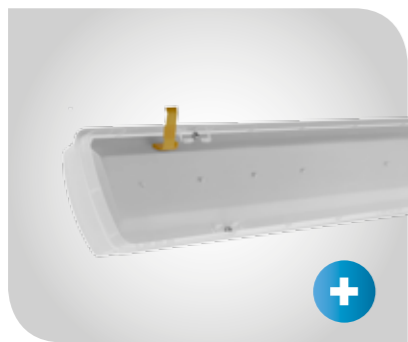
Power [W]	Colour temperature [K]	Luminous flux [lm]	Diffuser type	EEL	Dimensions L/W/H [mm]	Index
29	4000	4500	MAT	A++	1152/85/80	908101

Tytan led basic / 39W, 48W, 49W, 71W

Power [W]	Colour temperature [K]	Luminous flux [lm]	Diffuser type	Motion sensor	DIMM DALI	Emergency lighting [h]	Operating mode	Autotest	Through wiring	EEL	Dimensions L/W/H [mm]	Index
VERSION 39W												
39	4000	5750	MAT	-	-	-	-	-	-	A+	1152/85/80	358203
39	4000	5750	MAT	-	-	3	M	-	-	A+	1152/85/80	358289
39	4000	5750	MAT	-	-	-	-	-	LS2	A+	1152/85/80	358227
39	4000	5750	MAT	yes	-	-	-	-	-	A+	1152/85/80	358265
39	4000	5750	MAT	-	yes	-	-	-	-	A+	1152/85/80	358241
VERSION 48W												
48	4000	7100	MAT	-	-	-	-	-	-	A+	1152/85/80	358555
48	4000	7100	MAT	-	-	3	M	-	-	A+	1152/85/80	358593
48	4000	7100	MAT	-	-	-	-	-	LS2	A+	1152/85/80	358562
48	4000	7100	MAT	yes	-	-	-	-	-	A+	1152/85/80	358586
48	4000	7100	MAT	-	yes	-	-	-	-	A+	1152/85/80	358579
VERSION 49W												
49	4000	7200	MAT	-	-	-	-	-	-	A+	1432/85/80	358210
49	4000	7200	MAT	-	-	3	M	-	-	A+	1432/85/80	358296
49	4000	7200	MAT	-	-	-	-	-	LS2	A+	1432/85/80	358234
49	4000	7200	MAT	yes	-	-	-	-	-	A+	1432/85/80	358272
49	4000	7200	MAT	-	yes	-	-	-	-	A+	1432/85/80	358258
Version 71W												
71	4000	10400	MAT	-	-	-	-	-	-	A++	1432/85/80	358463
71	4000	10400	MAT	-	-	-	-	-	LS2	A++	1432/85/80	358456
71	4000	10400	MAT	yes	-	-	-	-	-	A++	1432/85/80	358494
71	4000	10400	MAT	-	-	3	M	yes	-	A++	1432/85/80	358500
71	4000	10400	MAT	-	yes	-	-	-	-	A++	1432/85/80	358487

RETROFIT REPLACEMENT CHART

FLUORESCENT		TYTAN LED	TYTAN LED BASIC
T8 2x18/T8 1x36W	➔	2500lm	-
T8 2x36W	➔	4500lm	-
T5 2x54W	➔	-	5750lm
T8 2x58W	➔	-	7100lm
> 2x58W	➔	7400lm	-
T5 2x80W	➔	9000lm	-
T5 2x49W	➔	5500lm	-
T8 2x58W	➔	7000lm	-
> 2x58W	➔	-	7400lm
T8 3x58W	➔	-	10400lm
T8 3x58W	➔	10900lm	-

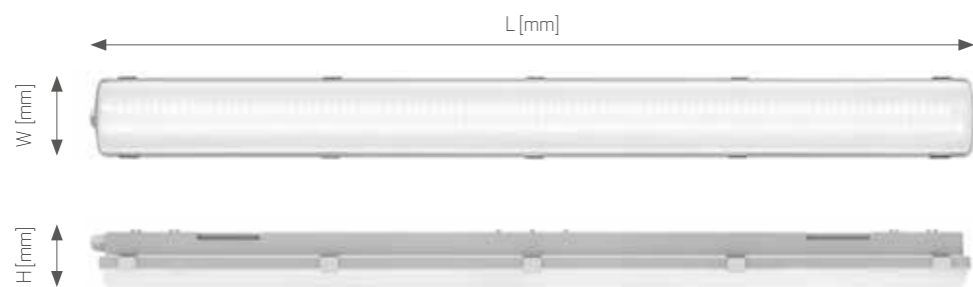


SUSPENDED LIGHTING MODULE WITH INTEGRATED DIFFUSER



PROTECTIVE GRID
for 1152mm version - index no. 907913
for 1432mm version - index no. 907920

Fitting length [mm]	Total luminous flux [lm]	Colour temperature [K]	Index
1152	2300/4200	3000	907265
1152	2500/4500	4000	907272
1152	7000/8600	3000	907289
1152	7400/9000	4000	907296
1432	6500/10300	3000	907302
1432	7000/10900	4000	907319
1432	5200	3000	907755
1432	5300	4000	907760
FOR TYTAN LED ENDURA MINUS VERSION:			
1152	9000	4000	907692
1432	10900	4000	907722



CE | ALL OUR PRODUCTS MEET EUROPEAN STANDARDS


Photos presented in the catalogue are illustrative and may differ from a real product appearance. Manufacturer reserves its right to change technical data of products without prior information.

Date of publication: 23.09.2019



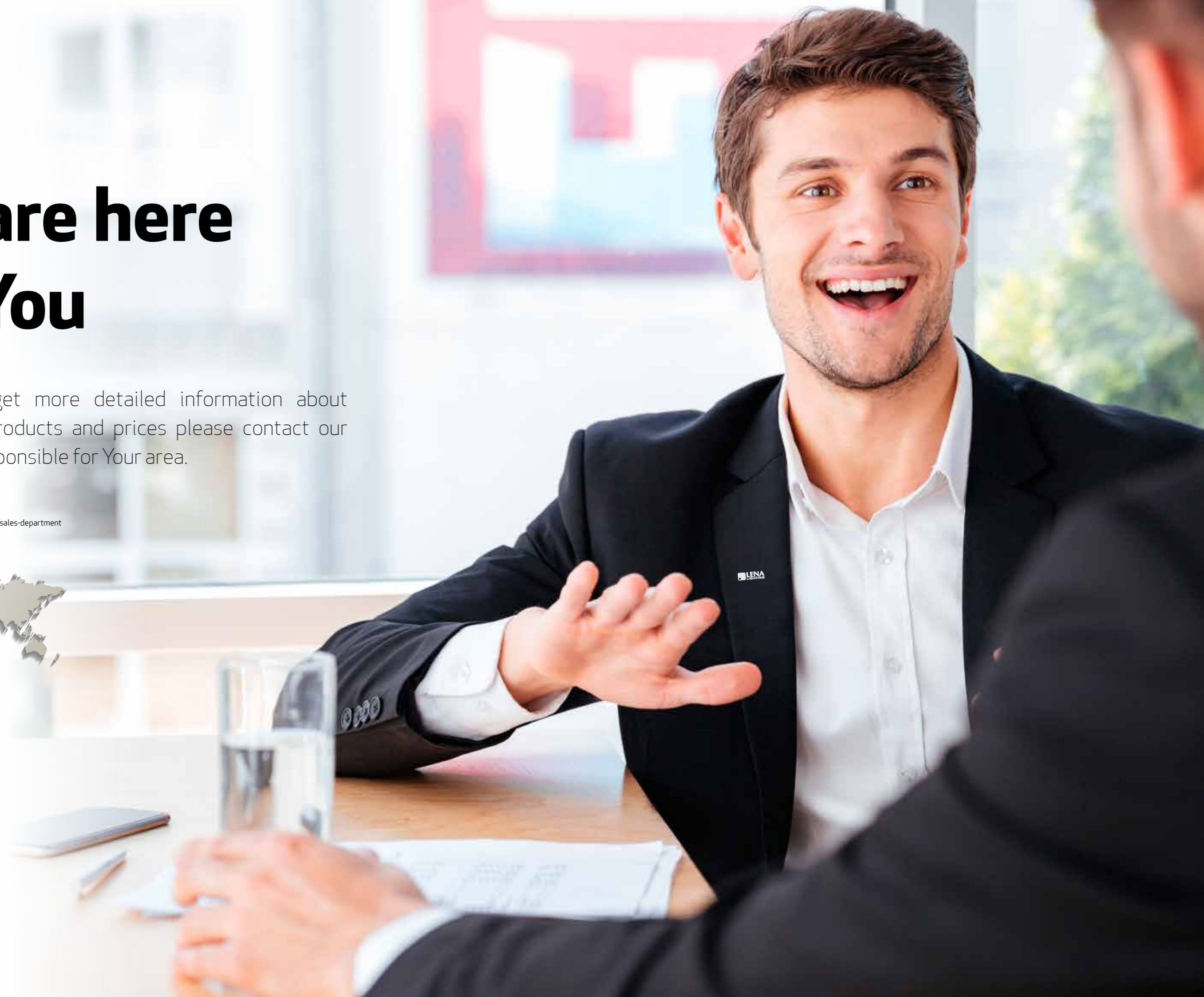
We are here for You

In order to get more detailed information about distribution, products and prices please contact our employees responsible for Your area.

 www.lenalighting.pl/en/contact/sales-department

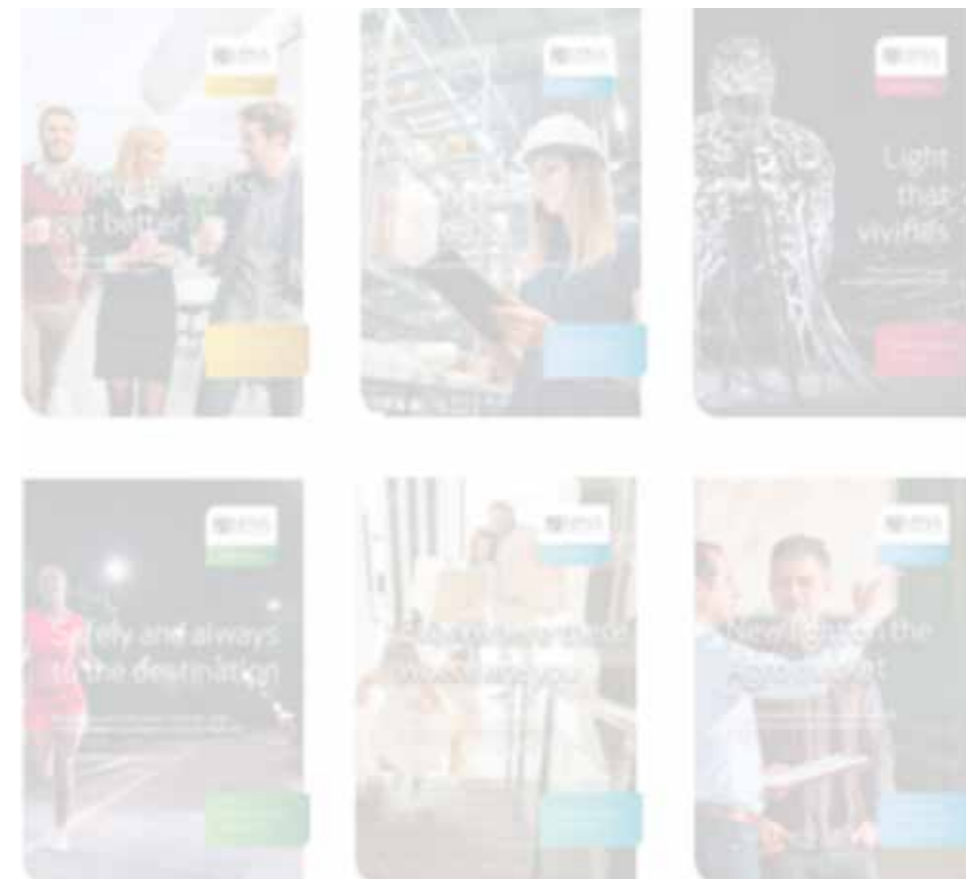
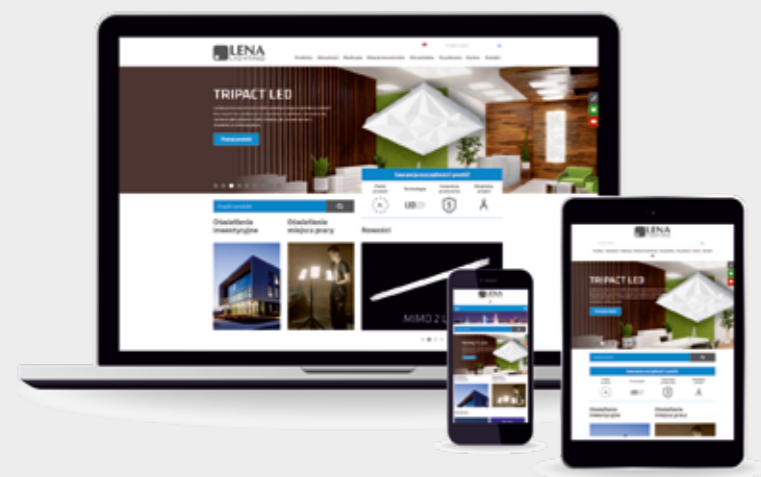


Lena Lighting S.A.
ul. Kórnicka 52
63-000 Środa Wielkopolska
POLAND
tel. +48 (61) 28 60 300
e-mail: office@lenalighting.pl
www.lenalighting.pl/en



Much more to discover..

Due to the limited number of pages, we could not include in this release all the information we would like to share with you. That is why a number of booklets dedicated to various applications has been created to present the offer versatility. We encourage you to take full advantage of them. Do you need personalized information? Do not hesitate to contact us. You are also welcome to visit our website www.lenalighting.pl/en



Coming soon...

We are working on a set of folders presenting the complete offer of our LED lighting divided into main segments: OFFICE, INDUSTRY, ARCHITECTURE, STREETS AND ROADS, REAL ESTATE and PUBLIC USE. We will distinguish them by color division to make the message more consistent and give a new expression to our offer.

www.lenalighting.pl/en

 bit.ly/2YIQUeI

 linkedin.com/company/lena-lighting

INDUSTRY



**New
generation**
luminaire



Lena Lighting S.A.
ul. Kornicka 52
63-000 Środa Wielkopolska
tel. +48 (61) 28 60 300
e-mail: office@lenalighting.pl

www.lenalighting.pl/en
tytan.lenalighting.pl/en